

IEEE & PES Chapters Introduction

Region 1-7 Chapters Meeting

Minneapolis, Minnesota, July 25, 2010

Meliha B. Selak

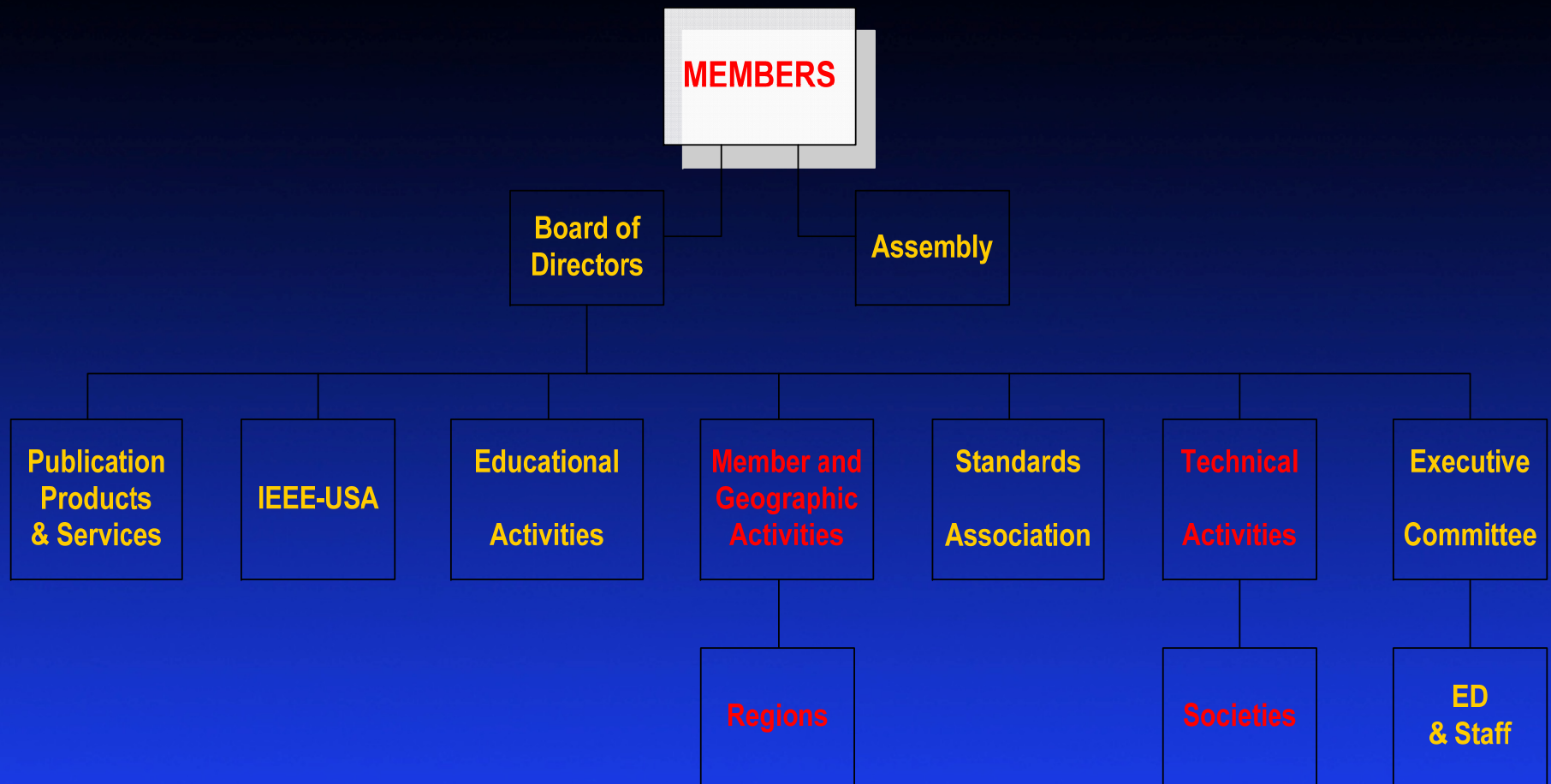
VP Chapters, PES Governing Board



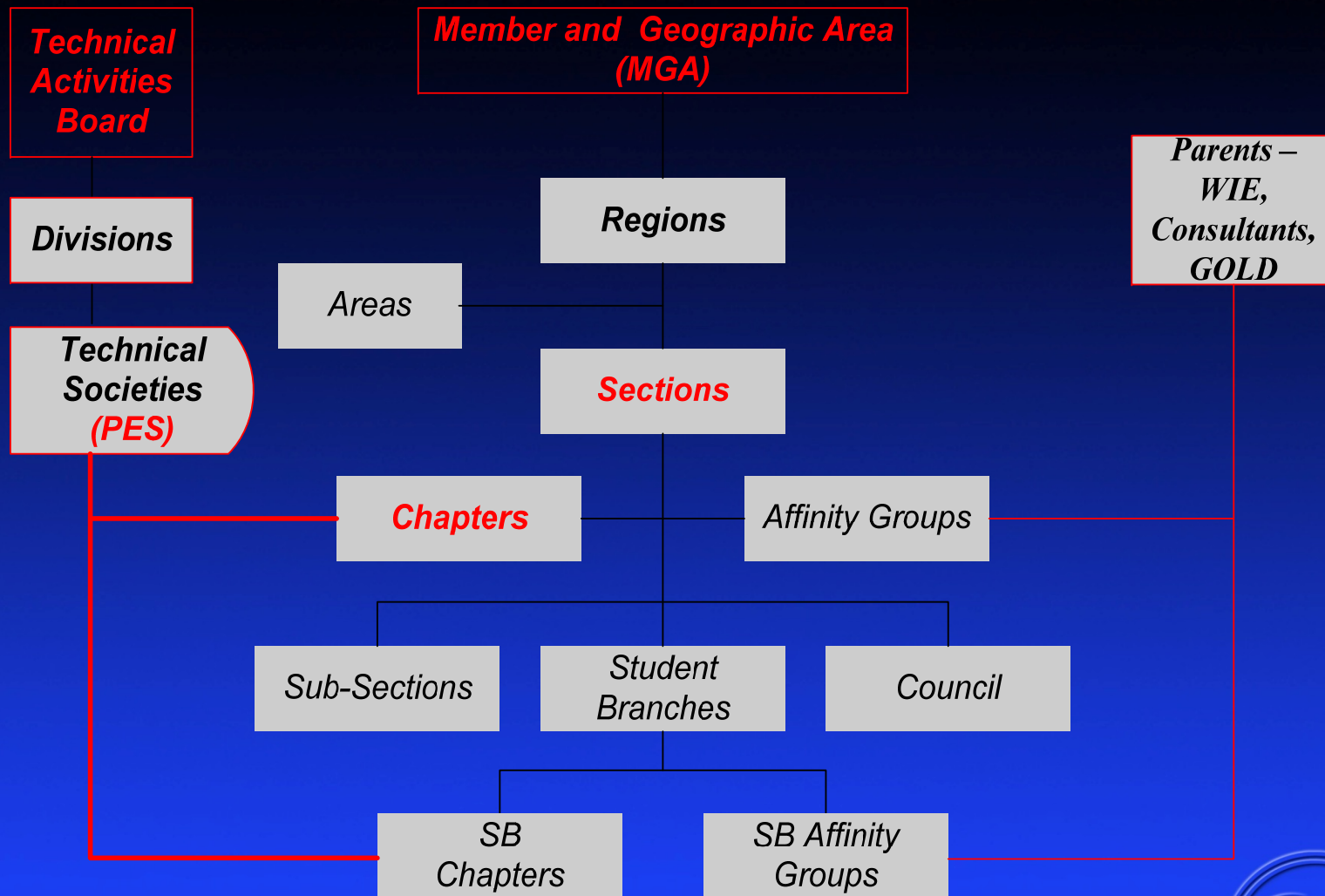
OUTLINES

- **IEEE Organization**
- **Chapters**
- **IEEE Chapter Structure**
- **PES Chapter's Resource**
 - **DLP**
 - **Chapter Awards**
 - **OEA**
 - **PES Chapter Chairs Training**
- **PES Regional and Chapter Representatives**
 - **Using the Organization Structure**
- **New PES Template**

IEEE Organization



IEEE Organization (continue)



WHAT IS A SECTION?

A Section is the basic operating geographic organizational unit of IEEE constituted by a minimum of 50 members for those who live/work in relatively close proximity to be served by activities that meet their needs and further the missions of IEEE.



WHAT IS A CHAPTER?

A Chapter is a technical subunit of one or more Sections, or a Council, constituted by a minimum of twelve (12) members of a Society concerned to represent and fulfill the technical needs of the members Who live/work in relatively close proximity.

WHAT IS A SOCIETY?

A Society is a global unit that operates in a distinct technical area and provides a forum and community for the exchange of technical information among Members in the respective discipline and industries of Electrical and electronics engineering and related arts and sciences.



Affinity Groups

Women in Engineering (WIE)

- *IEEE Women in Engineering (WIE) is the largest international professional organization dedicated to promoting women engineers and scientists.*

GOLD

- *Initiatives for Graduates Of the Last Decade To Reaching Out to Younger Engineers*

IEEE Life Members

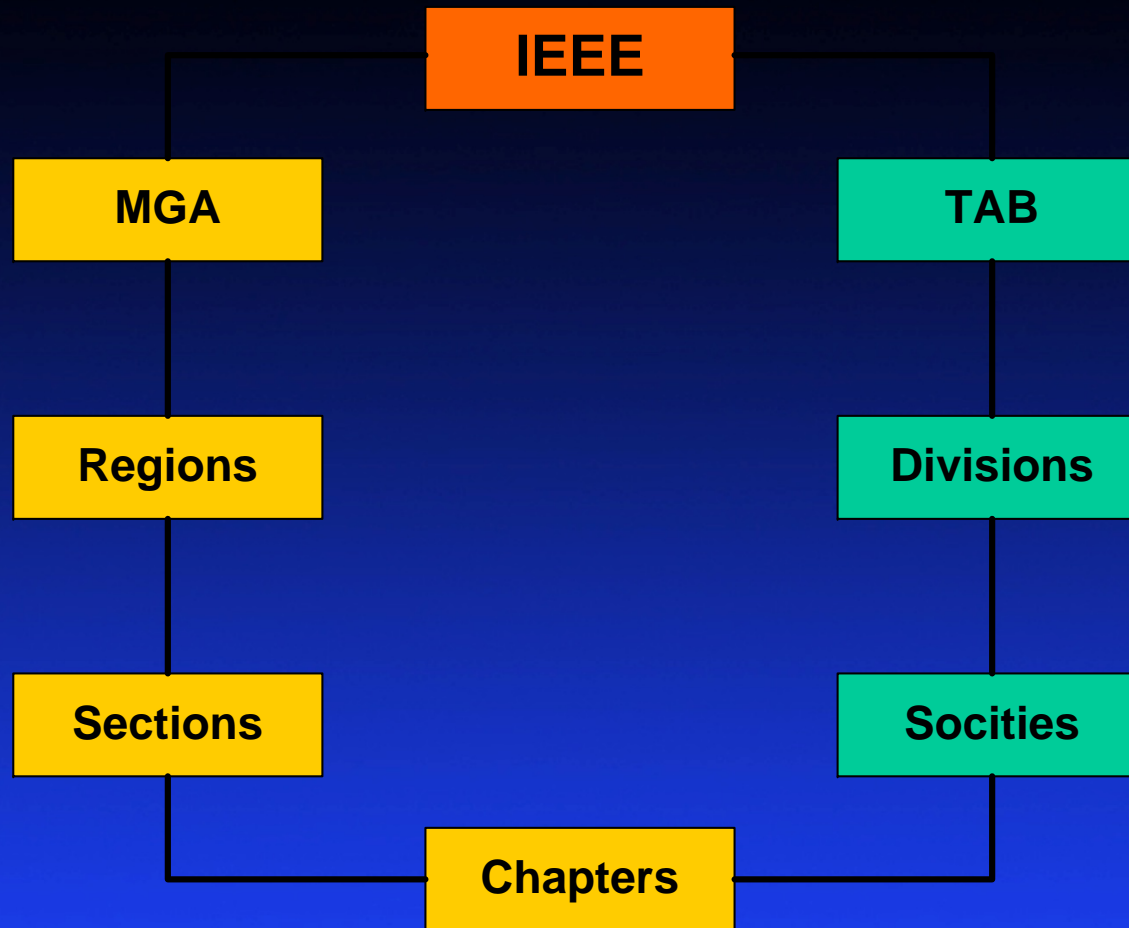
*65 Years Of Age + Years Of Continuous Membership
= 100 YEARS*



RELATIONSHIP IMPEDIMENTS

- *While many Societies have some programs for their Chapters, only about 1/3 of Societies really seem to take an interest in their Chapters.*
- *Societies only touch Sections through their Chapters and Sections do not normally reach out to Societies despite available links such as Region, Section & Society Chapter Coordinators.*
- *Many Chapters do not really communicate with their Sections.*
- *Sections sometimes co-sponsor conferences in direct competition with Society conferences with organizations that are outside IEEE. Who has the right to the intellectual property from these conferences?*

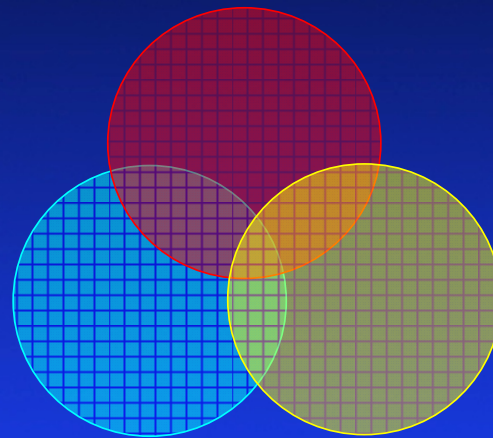
In Summary – Where Chapters Are?



Chapters

- **Chapters have two “Parents”**
- **The Section (primary responsibility for finance)**
- **The Society (support and technical activities)**

SECTIONS



CHAPTERS

SOCIETIES

What is a Chapter for ?

- *Provide services to local members*
 - Bring **information and knowledge**
 - Be a Place for **Networking**
 - Be a **Leadership Training** Ground
 - Represent **members interest** at the Society

Chapters are where everything happens and activities meet the members

Chapter Chairs

The most important volunteers in IEEE are the Chapter Chairs because they have direct contact with the members & facilitate technical activities for the members.

- *They report technical & educational meetings in the L31 report as a technical activity measure:*

<http://meetings.vtools.ieee.org/main>

- *PES Chapter Chairs submit PES Chapters Annual report to PES VP Chapters, PES Director, Regional Representatives and Award Chair by end of the Year:*

<http://www.ieee-pes.org/chapters/resources>



FINANCIAL RESOURCES FOR SECTIONS AND CHAPTERS

- *The Section receives \$2,000.00 (Annual) for completing a minimum of 5 activities and maintaining a membership of at least 25 members*
- *The Section receives \$3.00 (Annual) for each active member (M, S, A); \$1.5 AF and \$4 for SM,F.*
- *The Chapters receive \$200.00 (Annual) completing a minimum of 2 activities and maintaining a membership of at least 10 members*

FINANCIAL RESOURCES FOR SECTIONS AND CHAPTERS - continue

- *The Section receives a bonus of 10% (Annual) for the submittal of annual reports (Activities +Financial) on time + \$200 additional if they complete more than 10 activities*
- *The Chapters with more than 6 technical activities receive additional \$75*
- *Several societies provide awards and recognitions in function of chapters performance during the year*
- *Section and Chapters receive also special finance for technical activities and other important projects*

Why should the Society Care about Chapters?

- **Increased Technical activities for Members**
 - Lectures, Workshops, Conferences, and Social and Professional events
- **Technical activities for “potential IEEE & PES members”**
 - Especially where IEEE is not well-established
- **Increased visibility of the Society**
 - its structure - its publications - its meetings
- **Resource for potential Society leadership**
 - Most BoD members and Society Leaders evolved from their Chapter activities
- **Resource for hosting Society Symposia & Conferences**

The PES Chapter Services and Support

- **Distinguished Lecturer Program (DLP)**
- **AWARDS**
- **Publications**
- **Chapter Chairs Training**
- **Chapter Leadership Luncheons**
- **Travel Grants**

Distinguished Lecturer Program (DLP)

- *Provide support to PES Chapters so that they can develop interesting and informative technical programs for their members.*
- *Increase the educational awareness of the PES general membership on a variety of topics with perspectives ranging from research to the practical application of technology.*
- *For more details visit PES Chapters website at:*
<http://www.ieee-pes.org/chapters/resources/distinguished-lecturer-program>



How does the DLP work?

- **VP Chapters is responsible for DLP.**
- PES has prepared a list of lecturers, who have been recommended by the PES Governing Board, PES Technical Activities, PES Education/Industry Relations Activities, etc. to make presentations on topics of interest to PES Chapters.
- The list is available at the Chapters web page <http://www.ieee-pes.org/images/pdf/dlp-speaker-list.pdf> and also it can be obtained from the DLP coordinator.

What are the procedures?

- **Review the latest Distinguished Lecturer List and select a topic. DLP list can be obtained from the PES Web Page or send an email to the DLP coordinator**
- **Contact the Lecturer to discuss your proposed program and obtain an estimate of the travel expenses and then determine the local expenses (hotel, meals, etc.).**
- **If you cannot find an appropriate Lecturer from the List or if you want a particular speaker under DLP, who is not on the list, contact the DLP coordinator.**

PES Chapter Awards

- **High Performance Chapter Program (HPCP)**
- **OUTSTANDING CHAPTER AWARD (OCA)**
- **Membership Contest**
- **WEBSITE Contest**
- **Outstanding Engineer Award (OEA)**
- **Most Improved Chapter (*New*)**

High Performance Chapter Program (HPCP)

- Encourage and support effective PES Chapter programs.
- Reward Chapters that implement minimum program requirements and communicate with their members and PES in a timely and complete manner.
- Up to **\$1,000** award to each chapter that meets the requirements and deadlines.
- HPCP Nomination Form:

<http://www.ieee-pes.org/chapters/resources/awards>

HOW DOES THE HPCP WORK?

- **Annual Report by End of Year**
- **Minimum of 4 PES Chapter meeting**
- **Outstanding Engineer Award (OEA)**
- **PES Chapter Website**
- **Officers Report**

\$400 award to each chapter that meets the requirements and deadlines

Additional info at:

<http://www.ieee-pes.org/chapters/resources/awards/pes-high-performing-chapter-award>



OUTSTANDING CHAPTER AWARD (OCA)

Recognize a PES Chapter for achieving excellence in providing the best set of overall programs and activities for its Members.

<http://www.ieee-pes.org/chapters/resources/awards>



HOW DOES THE OCA WORK?

- **Chapters compete based on size:**
 - **Outstanding Large Chapter Award for Chapters with over 100 Members.**
 - **Outstanding Small Chapter Award for Chapters with 100 or less Members.**
 - **Evaluation based on six criteria**
 - **Weighted point scale for each criteria**

Additional info at

<http://www.ieee-pes.org/images/pdf/oqa.pdf>



MEMBERSHIP Contest

The _____ Chapter wishes to participate in the 2011 PES Chapters Membership Contest.

Chapter Chair: _____ Date: _____

Email: _____

City/State/Country: _____

Telephone: _____

Additional info at

http://www.ieee-pes.org/images/pdf/pes_membership_contest_2010.pdf



Criteria for Membership Contest Competition

Goals to exceed (minimum to qualify):

- Large chapters (>100 members) required increases over 6%
- Small chapters (\leq 100members) required increases over 15%

In each category top three chapters that exceed quota in % growth receive awards:

- First place - US \$1,000.00
- Second place - US \$ 500.00
- Third place - US \$ 250.00



WEBSITE Contest

- **First place - US \$1,000.00**
- **Second place - US \$ 500.00**
- **Third place - US \$ 250.00**

Additional info at:

<http://www.ieee-pes.org/chapters/resources/awards/power-and-energy-society-awards/web-site-contest>



Outstanding Engineer Award (OEA)

Chapter Recognition Award

- Local PES Members achievements in previous year
- PES Technical Working Group Members
(standard and Technical Guide)

OEA form at: http://www.ieee-pes.org/images/doc/PES_OEA_Request_Form.doc

Submit Completed OEA form to: pes.chapters.awards@ieee.org

Additional info at

<http://www.ieee-pes.org/chapters/resources/awards/power-and-energy-society-awards/outstanding-engineer-award>

Recipients of OEA by Regions are posted at our website above.



Most Improved Chapter

*Compeer results form previous year:
(Initiated by VP Chapters & Award Committee)*

- **Diversity of the technical presentations related to PES**
- **Meeting Attendance**
- **Membership increase**
- **Visibility in local community**
- **Web site**

Chapter Chairs Training

- *The Chapter Training Program for Region 1-7 has been scheduled in conjunction with PES General Meeting, every years.*
- *The Chapter Training Program for Region 8 has been scheduled for the weekend prior to the Power Tech (every two years)*
- *The Chapter Training Program for Region 9-10 has been scheduled for the weekend prior to some of significant PES Event in the Region (every two years)*

Chapter Leadership Luncheons

Chapter Leadership Luncheons has been held once per year and is during PES General Meeting

- **Meeting of all Regional Representatives**
 - **Region 1-10 Chapter Reports**
 - **Chapter general issues**
 - **PES Chapters Goal & Strategy**
 - **Appoint Secretary**
- **Chapter Awards presentations**

Travel Grants

- *Chapter Chairs of OCA Winner are granted by PES Award Committee up to \$2000*
- *Chapter Chairs attending CCs Training are granted by PES Chapters partially*
- *Chapter Representatives attending CCs Training are granted by PES Chapters*
- *Regional Representatives attending Chapter Leadership Meeting & Luncheons are granted by PES Chapter*

PES Chapter Services/Tools

- **Chapter Manual**

<http://www.ieee-pes.org/images/pdf/chapter-officer-reference-guide-v16.pdf>

- **Extensive resource, copies available on line**
- **Funding policies, PES process, awards**
- **New Chapter formation, IEEE requirements**
- **WWW references, forms, contact information**

All above at: www.ieee-pes.org/chapters

- **PES Chapters' Contacts:**

- **PES Chapters Organization at:**

<http://www.ieee-pes.org/chapters/contacts/pes-chapters-organization>

- **PES Chapters Chairs at:**

http://www.ieee-pes.org/images/pdf/2010_pes_ccs_by_mbs.pdf



Regional & Chapter Representatives

- **Regional Representatives**
 - Appointment of Regional Representatives (RR) are made by the Vice-President of Chapters Activities and approved by PES Board.
- **Chapter Representatives**
 - The RR with the approval of the VP Chapters selects and appoints Chapter Representatives (CR)

RRs and CRs are to provide guidelance and support to the Chapters

Global Chapter Outreach & Visitations

- *President and delegation attend Chapter Inauguration meetings worldwide*
- *BoD members regularly attend chapter meetings when on travel*
- *BoD meetings held at Chapter locations & reception hosted by PES.*
- *Publicized all PES related Events*
 - Chapter newsletter
 - Section news letter
 - PES newsletter
 - Power Globe
 - IEEE Spectrum
 - Utility & University newsletter



Regional & Chapter Representatives

<http://www.ieee-pes.org/chapters/contacts/pes-chapters-organization>

- *It is recommended that RR make an effort to train another PES volunteers in the duties of a RR. This provides continuity and may permit coverage in some areas where there are wide geographic distances between Chapters.*
- *It is important that RR encourage existing CR's to assist and eventually take the position.*

The five year term of Office

- *The five year term of office assures a flow of new thinking and a new relationship with Chapter Representatives.*
- *It requires the Chapter Representatives to seek new Chairs for their own replacement*

Using the Organization Structure

- *Regional Representative forwards information to the Chapter Representatives and ultimately to the Chapter Chair.*
- *This is a line and staff type of organization. It encourages the Chapter Chairs to look to the Chapter Representative for information and provides a closer link to the Chapters*

New PES Templates

<http://ieeepes.org/pes-powerpoint-templates>

